



Agricultural Program Update

Inside this issue:

Fall Hay Testing is here again..

Now that we have gotten some rain; hopefully, you have managed to cut or purchase enough hay for the coming winter season. Most hay producers have additionally been fighting armyworms in the fields. If you missed hosting an infestation of these insects, consider yourself very lucky indeed. The expenses incurred with armyworm control by some producers have been significant to say the least.

The Walker County **Fall Hay Evaluation** program has been scheduled for October 20, 2005 at the Sam Houston State University, Agricultural Complex Indoor Arena (next to I-45). We will be having a "Dutch Treat" fish fry again this year with the program so come out ready to enjoy a good meal. Speakers for this program will cover topics such as Animal ID, Feeding Beef Cattle with Forages and Utilizing Supplements When Needed, & Soil Fertility Management for Forage Systems.

*Hay sample deadline to the Walker County TCE office is October 4, 2005. Testing of your first sample in each class is FREE -sponsored by the Walker County Farm Bureau additional samples are \$5.00 each. Awards for this program are being sponsored by American Plant Food.

Walker County Pond Field Day	2
Beef Cattle Reproductive Conference	3
TDA Family Heritage Program	3
TDA Town Hall Meeting	4
Cow Country Congress Program	4
Wildlife Food Plot Program	5
Hay Evaluation Program	6
Multi County Horse Program	7
Fire Symposium	7

Timber Growers Field Day Scheduled for Early October

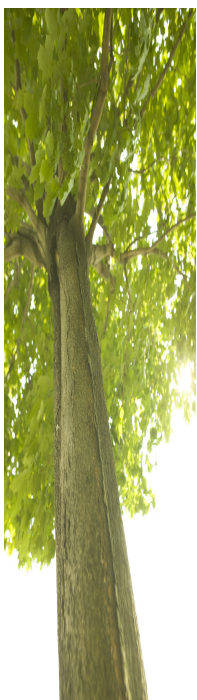
The Walker County Timber Growers will be hosting the Fall 2005 Timber Management Field Day on Saturday October 8, 2005. This program is tentatively planned to be held at PK Ranch on Hwy 19. Small landowners are encouraged to attend the Field Day and learn more about how you can manage your timber lands for economic benefit while protecting your valuable natural resources.

Topics for the Field Day are scheduled to include: Small Acreage Herbicide Application Options, Volume Estimation of Timber, Economic Benefits of Streamside and Aesthetic Buffers, plus Management Practices for the Energetic Landowner and how they may work in your forest. Lunch will be provided, co-sponsored by Walker County Farm Bureau.

Additional information is available from the Walker County Texas Forest Service or the Walker County Texas Cooperative Extension . **Two hours of Pesticide CEU credit will be available** for TDA Pesticide Applicators. Pre-registration is required for planning purposes, contact the Huntsville TFS at 936-295-5688.

EDUCATIONAL PROGRAMS OF INTEREST IN THIS ISSUE.

- Hay Testing
- Multi-County Beef & Horse Programs
- Pond Management
- Wildlife Food Plots



Pond Management Field Day



Program will begin
at the
**Walker County
Extension Office**
102 Tam Road
Huntsville, TX
*approximately two miles
north of the
Pilot Truck Stop on
Highway 75 N*
*After a brief classroom
session, we will travel to
a local pond for on-site
instruction!*

Join us on

Friday– September 23, 2005

from 3:00 P.M. until approximately 5:30 P.M. for this
informative meeting.

**2 Hours TDA
Applicator CEU
Credit!**

Field Day Topics:

- x Pond Design Requirements &
Construction Suggestions
- x Water Quality Issues
- x Should You Fertilize?
- x Assessing Fish Population & Health
 - x Stocking Decisions
 - x To Feed or Not To Feed?
 - x Common Aquatic Weeds
 - x Weed Control Options
- x How to Avoid Costly Mistakes!

**Program Sponsored
by the
Walker County
Livestock & Pasture
Committee.**

For more information
please call 936-435-2426

Reggie Lepley
Walker County Extension Agent
Agriculture



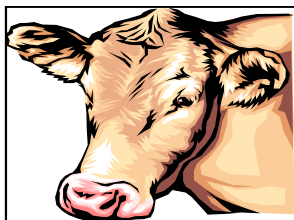
*Have a specific pond problem?
Bring your question to the
Field Day!*

TDA Family Land Heritage Program

Texas Department of Agriculture is seeking applications for the 2005 Family Land Heritage Program which recognizes farms and ranches that have been in continuous agricultural operation by the same family for 100, 150 and 200 years. Since the program started in 1974 more than 4,020 farms and ranches have been recognized in 226 Texas counties.

Farms and ranches that qualify will be honored during a ceremony in Austin in March 2006. The history of the farm or ranch will be chronicled in the 2005 Family Land Heritage Registry. In addition, honorees can obtain historic farm or ranch signage for their property.

Program applications are available through TDA, county judges and on TDA's web site. Program applications are due by November 15. For more information, contact TDA at (512) 463-2631.



Local Beekeeping Group Formed..

Anyone interested in participating in

the newly reactivated Walker County Area Beekeepers Association is invited to contact Chuck Johnson. Chuck can be reached at 936-291-0943 or cjohnson@consolidated.net for more information.



Applied Reproductive Strategies in Beef Cattle Conference

This program is designed for Veterinarians, Animal Scientist and Professional Breeders. Scheduled for November 12-13, 2005 at the Memorial Student Center, TAMU, College Station Texas. Program topics will include: Synchronization of ovulation for timed A.I. in English, European and Bos Inducus influenced females, Biological and managerial factors influencing fertility, Herd health programs and evaluation of reproductive potential, Adjunct technologies: fetal sexing, semen sexing, ET, IVF, and cloning. Registration for this program in \$200.00 until October 1, 2005 and \$250.00 after October 1, 2005. More information can be found on the TAMU Animal Science web site at <http://animalscience.tamu.edu>.

**HAY TESTING
Application Form**

- COMPLETE ALL INFORMATION & SECURELY ATTACH TO YOUR HAY SAMPLE:

(Sample entry DEADLINE: October 4, 2005)

Please attach the following information securely to your hay sample. The 1st sample entry per class is FREE, sponsored by the Walker County Farm Bureau, additional samples per class are \$5.00 each. Samples may be turned in at the Walker County Extension Office on TAM Road. Hay sample must be producer grown and processed through a mechanical hay baler. Awards for this program are sponsored by American Plant Food. Questions about your entry? Call: (936) 435-2426

CLASS OF HAY ENTERED:

PRODUCER GROWN _____
PURCHASED _____

IMPROVED BERMUDA _____
COMMON BERMUDA _____
BAHIA _____
SORGHUM _____
LEGUME _____
LEGUME GRASS MIX _____
RYEGRASS _____
MIXED GRASSES _____

NAME _____
PHONE _____
ADDRESS _____

ONLY ONE SAMPLE PER FORM

Samples Must Consist Of:
TWO BLOCKS From Square Bales OR
ONE FULL CLEAN FEED SACK from
Round Bales. NO PLASTIC BAGS!

TEXAS DEPARTMENT OF AGRICULTURE HOSTS TOWN HALL MEETINGS ACROSS THE STATE

AUSTIN — Agriculture Commissioner Susan Combs will visit with agricultural producers and rural communities at town hall meetings throughout the state to discuss issues impacting rural Texas and the agricultural industry.

The town hall meetings, hosted by the Texas Department of Agriculture, are open forums where producers and community members can discuss issues as well as present their ideas and solutions to the commissioner.

Area town hall meetings scheduled include:

Thursday, September 15

- Walker County, 8 a.m., Huntsville Chamber of Commerce, 1327 11th St., Huntsville.
- Brazos County, 10:45 a.m., Brazos Valley Council of Governments, 3991 E. 29th St., Bryan.

“Agriculture and rural communities face so many challenges, and I want to know firsthand about local concerns and issues,” Combs said. “Some regions of Texas have very specific needs, and by working with producers, industry groups and community leaders, we can address these issues to ensure that agriculture and rural Texas remain strong throughout the state.”

The town hall meetings are free and open to the public. For more information, contact Ryan O’Neal, producer relations specialist at TDA, at (512) 463-4879.



COW COUNTRY CONGRESS

CHAMPION RANCH,
LEON COUNTY

Beef Producers are invited to attend the 2005 Cow Country Congress scheduled for Thursday, September 29 at the scenic five thousand acre Champion Ranch in Leon County outside of Centerville, Texas. Registration begins at 8:30 AM.

A variety of topics are being offered for the educational benefit program participants. Selected topics include; Status of the National Animal ID program, Practical Cattle Management including Animal ID and ranch based record keeping systems for source and age verification, Tour of Champion Ranch, Determining Body Conditioning of Cattle, Winter Pasture Forages, and Wildlife Management Topics for Ranchers.

Registration for this program includes a rib-eye steak lunch for \$10.00 per person. Commercial exhibitors will be on hand to show a variety of new products and services available. Texas Department of Agriculture Licensed Pesticide Applicators will be eligible to receive **2 Hours of CEU credit** toward their license renewal. Pre-registration is required for meal planning by September 23, 2005. Contact the Walker County Extension Office to pre-register at (936) 435-2426.

Cow Country Congress is an annual educational event sponsored by the Texas Cooperative Extension offices in Anderson, Freestone, Leon, Houston, Trinity, Madison and Walker Counties.

Wildlife: Food Plot Management

Walker County
Texas Cooperative
Extension Office
Hwy 75 N & Tam Road

September 8, 2005
7:00 PM

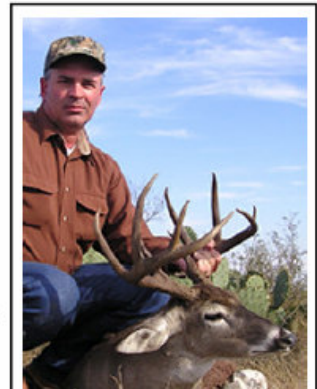


2 Hours of TDA Pesticide CEU's
will be provided!

PROGRAM
SPONSORED BY:
THE EXTENSION LIVESTOCK &
PASTURE COMMITTEE OF
WALKER COUNTY

Wildlife Food Plots.. Are They for You?

Selection, planting &
management of wildlife food
plots and forages.

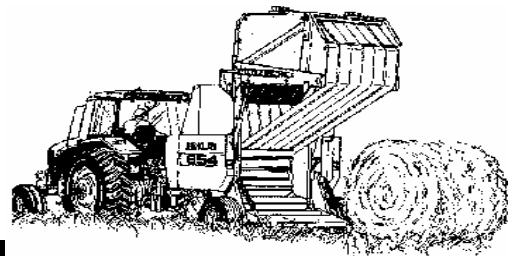


Guest Speaker
**Dr. Larry
Redmon**
Extension Forage
Specialist

Wildlife Food Plot Management & Utilization

- ♦ Site Selection
- ♦ Soil Considerations
- ♦ Forage Varieties &
Selection for
Walker County:
 - Small Grains
 - Legumes
 - Other Species
- ♦ Soil testing suggestions
- ♦ Fertilization needs & requirements
- ♦ Equipment selection
- ♦ Weed control issues
- ♦ Herbicide options, selection and
utilization

Extension programs serve people of all ages regardless
of socioeconomic level, race, color, sex, religion,
disability or national origin. The Texas A&M University
System, U.S. Department of Agriculture, and the County
Commissioners Courts of Texas Cooperating.



HAY QUALITY TESTING 2005

Samples due:
October 4, 2005
See entry form enclosed in
Newsletter

Activity Format for 2005:

- ◆ This event will be held as a Forage Quality Testing Campaign
- ◆ A selection of non-identified samples will be displayed for educational comparison

Forage testing is an annual educational activity developed by Texas Cooperative Extension and the Walker County Extension Livestock & Pasture Committee.

**Testing results will be returned
during the Hay Evaluation
Program on**

**Thursday
OCTOBER 20, 2005
6:30 PM**

**At the
SHSU Ag Complex, Indoor Arena
(beside I-45)**

**If the producer is not in
attendance on October 20th
testing results will be
mailed.**

Samples must consist of two flakes from square bales or a FULL clean feed sack from round bales.

For more information contact the Walker Co. Texas Cooperative Extension Office at (936) 435-2426.

**Hay Samples must be submitted to the Walker County
Extension Office by October 4, 2005**

Program Topics:

- **Animal ID, Feeding Beef Cattle with Forages and Utilizing Supplements When Needed.** Speaker Dr. Jason Cleere, Beef Cattle Specialist
- **Soil Fertility Management for Forage Production,** Speaker Dr. Mark McFarland, Soil Fertility Specialist

Hay Testing Expenses Sponsored by:

Walker County Farm Bureau

Awards Sponsored by:

American Plant Food Corporation

Extension programs serve people of all ages regardless of socioeconomic level, race, color, sex, religion, disability or national origin.

The Texas A&M University System, U.S. Department of Agriculture, and the County Commissioners Courts of Texas Cooperating.

**6:30 PM
Fish Fry
\$ 3.00 per person**

MULTI-COUNTY HORSE MANAGEMENT FIELD DAY & TRADE SHOW

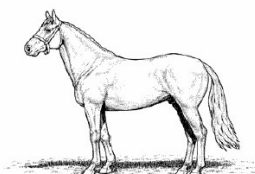
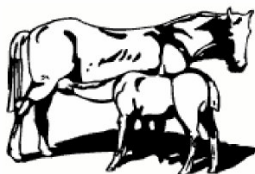
(Counties Sponsoring the event are Burleson, Fort Bend, Harris,
Madison, Montgomery, Walker, Waller and Washington)

CARDEN-WALLER COOPERATIVE EXTENSION BUILDING
PRAIRIE VIEW A&M UNIVERSITY
PRAIRIE VIEW, TEXAS

SEPTEMBER 30, 2005

9:00 A.M. - 3:00 P.M.

REGISTRATION FEE: \$10.00
(includes meal and hand-outs)



TOPICS

Body Condition Scoring
Forage Quality
Feeding Maintenance Rations
Horse Identification & Theft Prevention
Horse Health
Horse Acupuncture
Working Demonstrations

For more information, please contact Dr. Jeff Koch at
936-857-2518 or Mr. Reggie Lepley at 936-435-2426.



COOPERATIVE EXTENSION PROGRAM
Prairie View A&M University
Prairie View, Texas



Programs conducted by the Cooperative Extension Program serve people of all ages regardless of race, color, national origin, sex, religion, disability, political beliefs and marital or family status. (Not all classes are protected by legal statutes.).

Trans Texas Corridor Info

In case you missed the local public meeting held on the I-69 Trans Texas Corridor this August, you may want to do a little research on the internet. Additional information on the I-69 TTC project is available on the web at www.keeptexasmoving.org/projects/i69/. Information on the web site includes maps of proposed routes and areas of study.

Beef Cattle Workshop Waller County

October 7, 2005—
Carden-Waller Cooperative Extension Building, Prairie View A&M University. Registration begins at 8:00 AM. Topics to be covered include: Mineral Nutrition, Electronic Identification, Electronic ID Demonstration, Various Castration and Dehorning Methods. For more information, contact Dr. Jeff Koch at (936) 857-2518.

Fire as a Tool for Managing Wildlife Habitats in Texas A Symposium for Land Managers

September 14-16, 2005 is the date for this event at the YO Ranch Hotel and Conference Center in Kerrville, Texas. This program is sponsored by the Texas Wildlife Association. Pre-registration before September 1st is \$50.00. Topics for the program will include: The Spread of Fire, History & Use of Fire in Texas, Fire Ecology in Various Ecoregions, Fire Case Studies, Adoption by Management Agencies, Enhancing Adoption by Stakeholders, Fire as a tool for Ecosystem Restoration of Black-capped vireo- Bobwhites, - Whitetail deer. For more information contact Dale Rollins at (325) 653-4576 or visit <http://texnat.tamu.edu>.





Help Support

- ◆ Educational Programs for Landowners
- ◆ Youth Scholarships
- ◆ Legislative Awareness

**Join the
Walker Co. Timber
Growers & Landowners
Association**
*\$10.00 Annual
Association Membership*
Call the Texas Forest
Service at (936) 295 – 5688
for additional information.

Provisions from the American Disability Act will be considered when planning educational programs and activities. Please notify the Walker County Extension Office if you plan on attending an Extension Educational program and need specialized services. Notification of at least two weeks in advance is needed, so that we may have ample time to acquire resources needed to meet your needs. Extension programs serve people of all ages regardless of socioeconomic level, race, color, sex, religion, disability or national origin. The Texas A&M University System, U.S. Department of Agriculture, and the County Commissioners Courts of Texas Cooperating. The information given herein is for educational purposes only. Reference to commercial products or trade names is made with the understanding that no discrimination is intended and no endorsement by the Cooperative Extension Service is implied.

We hope you enjoy this issue of the Walker County Agricultural Program Update. If you have questions or would like more information call us at (936) 435-2426.



**Walker County Extension Office:
102 Tam Road Suite B, Huntsville Texas 77320
<http://walker-tx.tamu.edu>**

Sincerely,

**Reggie Lepley
County Extension Agent – Agriculture**

Non-Profit Org.
U.S. Postage Paid
Huntsville, Texas
Permit #240

Texas Cooperative Extension
102 Tam Road Suite B
Huntsville, Texas 77320