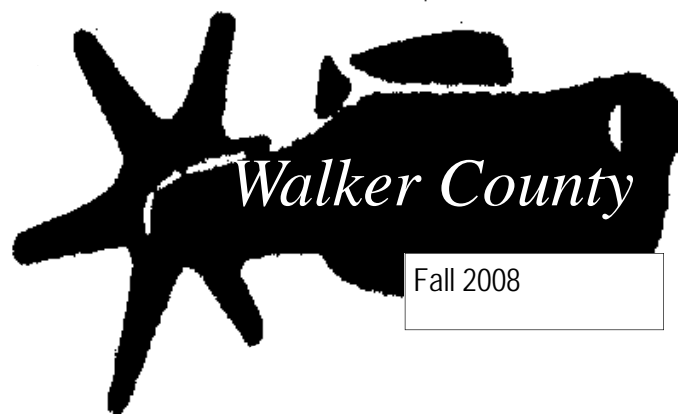


# Agriculture News..



**2008 Cow Country Congress  
Corlay Farm & Cattle Co.  
Dodge, Texas  
September 26th, 2008**

**Help Walker County Welcome the 2008  
Cow Country Congress Delegation!**

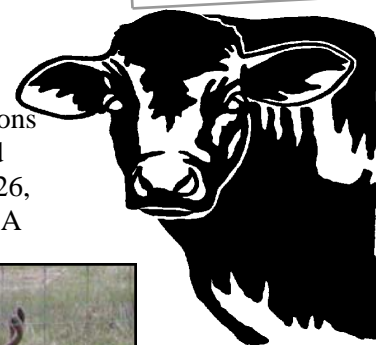
Cow Country Congress is an annual multi-county event supported by the Extension Beef & Forage Committees from Walker, Madison, Houston, Trinity, Leon, Freestone and Anderson Counties. This educational program rotates within the group of host counties each year. In addition to the traditional seven county area, beef producers from outside these counties are invited to attend this educational program. Participants in attendance will have the opportunity to visit with a variety of commercial exhibitors several times during the course of the day between presentations, demonstrations, and tours of the host property.

The 2008 Cow Country Congress program will meet at the Corlay Farm & Cattle Co. in Dodge, Texas on Friday, September 26th. This multifaceted agricultural enterprise is owned by Dr. Jody Crawford of Huntsville. Dr. Crawford's farm has been known in Walker County for extremely high quality hay production, and intensive beef herd management characterized by progressive reproductive practices. Dr. Crawford's interest in wildlife management has developed into a variety of wildlife related enterprises and projects which will be viewed on the ranch during the program. Corlay Farm & Cattle Co. has had an ongoing quail management and establishment program for many years and is now diversifying into Whitetail deer operations. This event will showcase truly outstanding facilities for working both cattle and Whitetail deer.

Program registration will begin at 8:30 AM. The program will begin with introductions at 9:00 AM. Individuals interested in attending the 2008 Cow Country Congress should R.S.V.P. prior to September 22nd to the Walker County Extension Office (936) 435-2426, or their local County Extension Office from any of the seven traditional host counties. A registration fee of \$15.00 per person will provide each participant a Steak Lunch with ALL the trimmings! In addition to the benefits of a catered lunch, on-site commercial vendors, and touring the ranch operation, each participant with a Texas Department of Agriculture- Pesticide Applicators License will be eligible for 2 hours of Continuing Education Credits for renewal of their license. Additional participant credit will be given for Beef Quality Assurance (BQA) recertification.

**Special points of  
interest:**

- Cow Country Congress
- Fall Hay Testing Campaign
- Leasing Land for Minerals or Hunting
- Texas Forest Expo
- Weed & Brush Tour
- Fall Plant Sale
- LEAF-PRO Horticulture Programs
- USDA Disaster Assistance Program



# Walker County Educational Opportunities: (Fall 08)

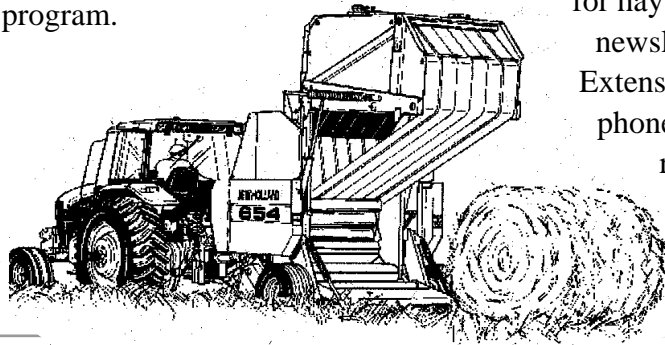
## **USDA Farm Services Disaster Assistance Program Informational Meeting August 28, 2008**

The Farm Services office will be holding a 6:30 PM meeting on Thursday, August 28 to explain the current disaster assistance program available through USDA. This program is designed to assist producers with drought related losses. The meeting will be held in the Community Meeting Room of West Hill Mall in Huntsville, TX.

## **Weed & Brush Tour SHSU Gibbs Ranch August 29, 2008**

Dow AgroSciences, Sam Houston State University and Texas AgriLife Extension Service will be holding a Weed & Brush Tour on Friday, August 29th. This activity will visit four herbicide applications for brush control and broadleaf pasture weeds. A discussion of several warm season forage legumes will be part of the program. The Field Day will begin at 3:00 PM at the SHSU Gibbs Ranch on Hwy 75 and will conclude with a meal and presentations at the Texas Department of Criminal Justice Prison Museum.

Three hours of continuing education credits will be provided for Texas Department of Agriculture Pesticide Applicators. R.S.V.P. is requested to (936) 435-2426 for meal planning purposes. There is no charge for this program.



## **Land Leasing –101 October 14, 2008**

Land owners who have thought about leasing land for minerals, hunting or ecotourism operations will want to place October 14, 2008 on their calendar.

The Walker County Soil & Water Conservation Board and the Walker County Extension Livestock & Pasture Committee will be sponsoring this program at 7:00 PM at the Walker County Texas AgriLife Extension Service Office.

This presentation will be given by Judon Fambrough, with the Texas Real Estate Center at Texas A&M University. See the program flyer in this newsletter.

## **It's Hay Testing Time: Fall Hay Testing Campaign: Samples due October 17, 2008**

It is time to start collecting your hay samples for the Walker County Fall Hay Testing Campaign.

Samples for the Walker County Fall Hay Testing Campaign are due in the Extension Office, before October 17th. Your first entry in each class is FREE! Additional entries per class are \$5.00 each. This is an excellent (and economical) way to evaluate the quality of your stored forage. Knowing what you are feeding is extremely important when deciding when and how to utilize your hay with different classes of livestock.

The county hay testing campaign is a great method for economically evaluating your forage. Entry forms for hay samples are enclosed in this newsletter. Contact the Walker County Extension Office for more information. Our phone number is (936) 435 – 2426. Testing results and feeding recommendations will be mailed to participants.

# Hay Testing Form

– COMPLETE ALL INFORMATION & SECURELY ATTACH TO YOUR HAY SAMPLE:

(Sample DEADLINE: October 17, 2008)

Please attach the following information securely to your hay sample. The 1st sample entry per class is FREE, sponsored by the Walker County Farm Bureau, additional samples per class are \$5.00 each. Samples may be turned in at the Walker County Extension Office on TAM Road.

## CLASS OF HAY ENTERED:

PRODUCER GROWN \_\_\_\_\_  
 PURCHASED \_\_\_\_\_

IMPROVED BERMUDA \_\_\_\_\_  
 COMMON BERMUDA \_\_\_\_\_  
 BAHIA \_\_\_\_\_  
 SORGHUM \_\_\_\_\_  
 LEGUME \_\_\_\_\_  
 LEGUME GRASS MIX \_\_\_\_\_  
 RYEGRASS \_\_\_\_\_  
 MIXED GRASSES \_\_\_\_\_

Questions about your entry? Call: (936) 435-2426

NAME \_\_\_\_\_  
 PHONE \_\_\_\_\_  
 ADDRESS \_\_\_\_\_

**ONLY ONE SAMPLE PER FORM**

Hay Testing Campaign Sponsored by:

**Walker County Farm Bureau**

## Walker County Master Gardener LEAF-PRO Community Programs Schedule:

- August 8 (10:00 AM) "Vegetable Gardening" at the Huntsville Public Library.
- August 19 (10:00 AM) "Colonial Herbs" at the Conroe Public Library.
- September 3 (10:00 AM) "Bromeliads" at the Tri County Diggers meeting.
- September 17 (6:30 PM) "Trees in the Home Landscape- Can they help with your utility expenses?" at the Walker County Texas AgriLife Extension office.
- October 1 (10:00 AM) "Backyard Habitat" at the Tri-County Diggers meeting.
- October 11 (Plant Sale Day) Workshops at the Walker County Texas AgriLife Extension office –times are tentative call closer to the date for final schedule:
  - Herbs (9:00 AM)
  - Bulbs, Tubers & Rhizomes (9:30 AM)
  - Native Plants (10:00 AM)
- October 16 (6:30 PM) "Vegetable Gardening" at the Audubon Society meeting

## The list for the 2009 WC Master Gardener Training Class is developing now.

Class seating is LIMITED - Contact the Walker County Extension office to be placed on the contact sheet.

## Master Gardener Fall Plant Sale

October 11, 2008

Mark Your Calendar!!

Saturday, October 11

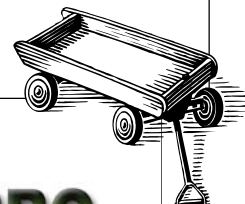
8:00 AM—2:00 PM

At the Walker County Texas AgriLife Extension Service Master Gardener Green House & LEAF-PRO Demonstration Gardens

### Plants for Sale:

- Bulbs
- Trees
- Vegetables
- Much More...

Bring Your Wagon!



Don't Miss This!





# Land Leasing -101

2008

*Items of interest for  
landowners when  
leasing land for:*

**OCTOBER  
14, 2008**

- *Minerals*
- *Hunting or Eco-Tourism*

Know what makes a fair lease. Learn about items which need to be agreed on prior to signing:

- *Responsibilities*
- *Conditions*
- *Payment*
- *Operations*
- *Land and facilities description*
- *Access*
- *Use by others*
- *Arbitration procedure*
- *Obligations of heirs*
- *Other matters particular to the individual situation*

Guest Speaker:  
Judon Fambrough,  
Texas Real Estate Center  
Tx A&M University System



**7:00 PM Tuesday  
OCTOBER 14th, 2008**  
Walker County Texas AgriLife  
Extension Office  
Hwy 75 N & Tam Road

This program is Co-Sponsored by the Texas AgriLife Extension, Livestock & Pasture Committee and the Walker County Soil & Water Conservation Board.

For more information contact the Walker Co. Texas Cooperative Extension Office at (936) 435-2426.

Walker County – 2008 Host for

# Cow Country Congress

**Corlay Farm & Cattle Co.**

**Dodge, Texas (FM 405)**

**September 26, 2008**

**8:30 AM – Registration**

**Registration Fee: \$15.00 per person**

*R.S.V.P. is required for Meal Planning prior to September 22nd.*

*Contact Your Local County Extension Office.*



**9:00 AM – Welcome:**

Topics & Presentations:

**Alternative Fertilizers**

“The Good, The Bad & The Ugly”

**Artificial Insemination & Embryo Transfer for small producers-**

Realistic Expectations, Logistics, Equipment & Practices

**Forage Legumes-**

Can They Meet Your Needs

Alternative Methods for Legume Establishment

**Native Forages**

Selection, Establishment & Management

**Noon Meal: Steak and ALL the Trimmings!**

Concurrent Sessions:

**Beef Quality Assurance –Chute Side Management**

**Facilities for working Whitetail Deer**

**Tour of Deer Breeding Pens**

**2 HOURS  
of TDA  
C.E.U. CREDIT**

**3.5 Hours of BQA  
C.E.U. CREDIT**

**Additional program information is available  
from the Texas Cooperative Extension  
Office, Walker County (936) 435-2426.**

*This program is supported by the Extension  
Beef & Forage Committees from Walker, Madison,  
Houston, Trinity, Leon, Freestone and Anderson  
Counties.*

*Visit With  
Commercial Vendors from a  
Variety of Ag Support Industries*



We want **YOU** for the Walker County Master Gardener program!

Call (936) 435-2426 for more information or to sign up.

Join the Walker County  
Timber Growers &  
Landowners Association  
at the  
**Texas Forest Expo**

October 27-28, 2008

Courses on:  
Timber Taxation  
Tree Health  
Wildscaping  
Feral Hogs  
Biomass & Renewable Energy  
Pond Management  
Chainsaw Maintenance  
Much, Much, More  
TDA Pesticide Applicator CEU:s  
will be available

Contact:  
[texasforestexpo@tfs.tamu.edu](mailto:texasforestexpo@tfs.tamu.edu)

Call 936-273-2261 for additional information.

Provisions from the American Disability Act will be considered when planning educational programs and activities. Please notify the Walker County, Texas AgriLife Extension Service office if you plan on attending an Extension Educational program and need specialized services. Notification of at least two weeks in advance is needed, so that we may have ample time to acquire resources needed to meet your needs. Extension programs serve people of all ages regardless of socioeconomic level, race, color, sex, religion, disability or national origin. The Texas A&M University System, U.S. Department of Agriculture, and the County Commissioners Courts of Texas Cooperating. The information given herein is for educational purposes only. Reference to commercial products or trade names is made with the understanding that no discrimination is intended and no endorsement by the Texas AgriLife Extension Service is implied.

**I hope you enjoy this issue of Walker County Agriculture News. If you have questions or would like more information call us at (936) 435-2426.**

**Walker County Extension Office:  
102 Tam Road Suite B, Huntsville Texas 77320  
<http://walker-tx.tamu.edu>**

Sincerely,

*Reggie Lepley*

**Reggie Lepley  
County Extension Agent – Agriculture**



Permit #240  
Huntsville, Texas  
U.S. Postage Paid  
Non-Profit Org.

Texas AgriLife Extension Service  
102 Tam Road Suite B  
Huntsville, Texas 77320