

# Livestock Judging...

## Market Lambs and Goats;

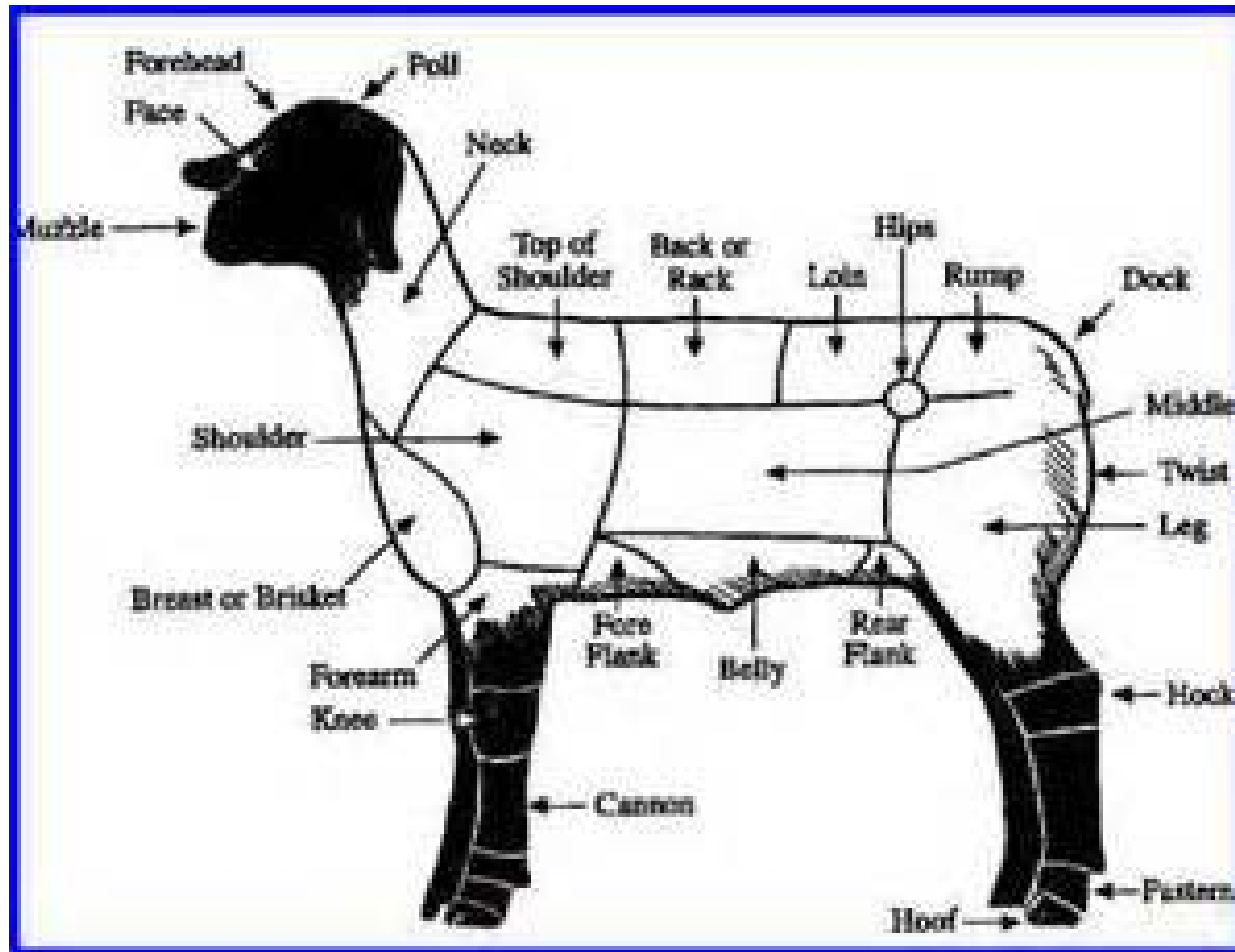
## Breeding Sheep

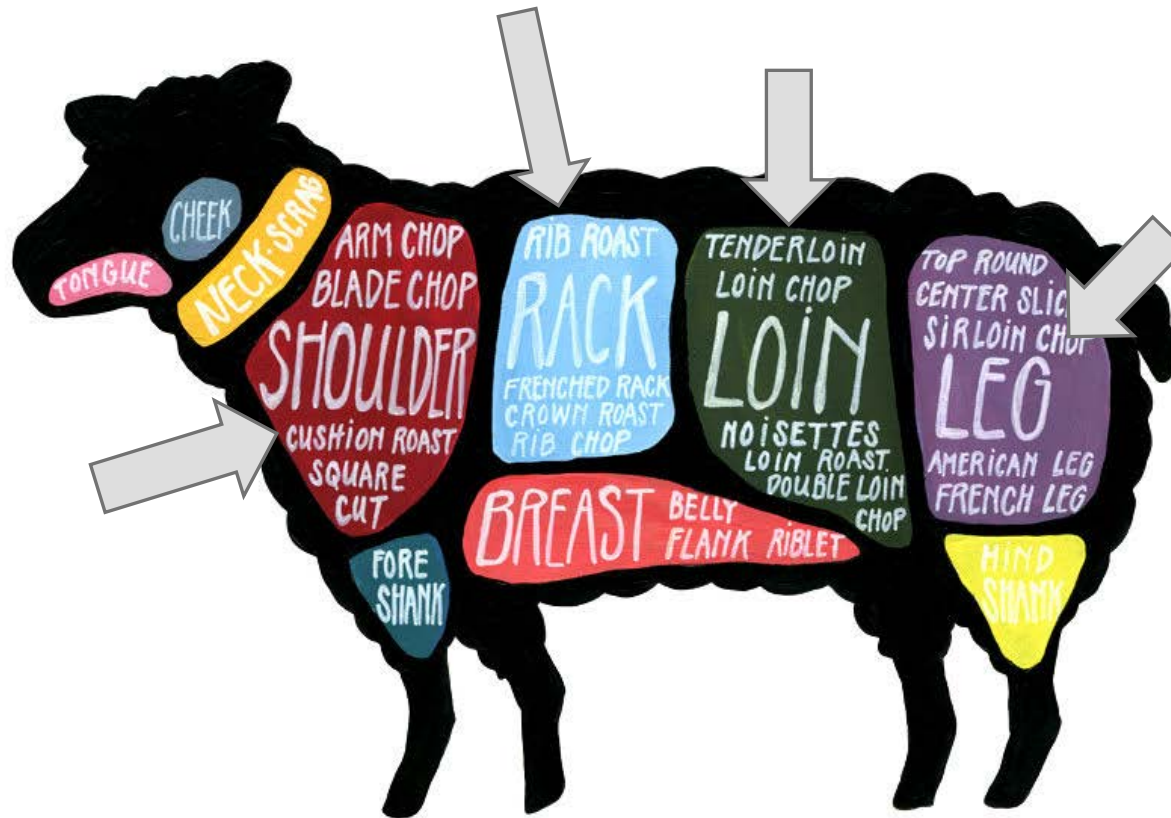
Cullen D. Tittle

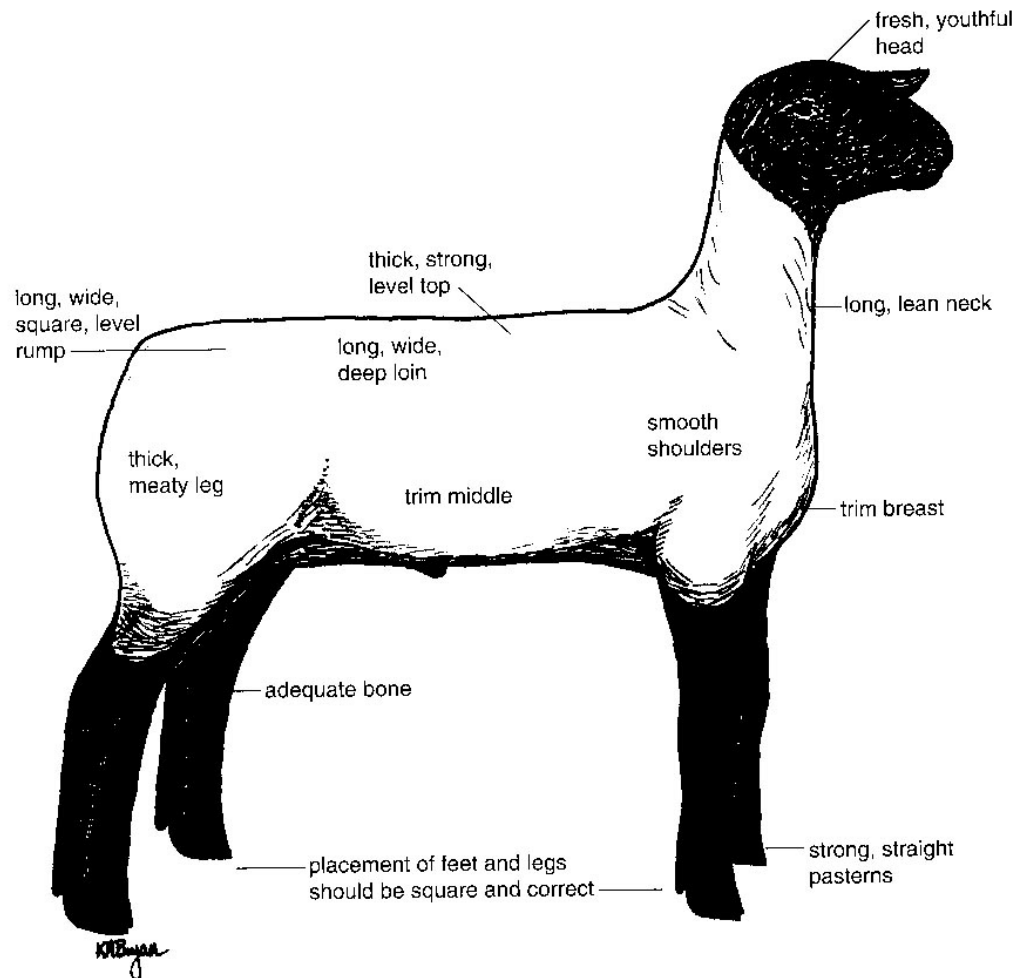
County Extension Agent – ANR

Brazos County

TEXAS A&M  
**AGRILIFE**  
**EXTENSION**







	NORMAL RANGE	AVERAGE	IDEAL
Live weight (lb.)	85 - 145	110.0	120.0
Dressing percent	45 - 58	52.0	52.0
Fat thickness (in.)	.05 - .60	.30	.12
Ribeye area (sq. in.)	1.5 - 3.2	2.25	2.80
KP fat percent	1.5 - 6.0	3.5	2.0
Leg score	low Good - high Prime	avg Choice	low Prime

Adapted from *Live Animal Carcass Evaluation and Selection Manual*, 4th edition, 1993,  
Donald L. Boggs and Robert A. Merkel.

# What we're looking for...

- ⊙ Muscle (**Leg, Loin**, Rack, Shoulder)
  - ⊙ Quantity
  - ⊙ Location
- ⊙ Skeletal correctness (impacts balance and eye appeal)
  - ⊙ Base width
  - ⊙ Width between pins; square-wide-long-level hip
  - ⊙ Rib shape..... ( ) or I I
  - ⊙ Long-level spine
  - ⊙ Elevated chest floor
  - ⊙ Smooth shoulders
- ⊙ Correct condition or fat cover





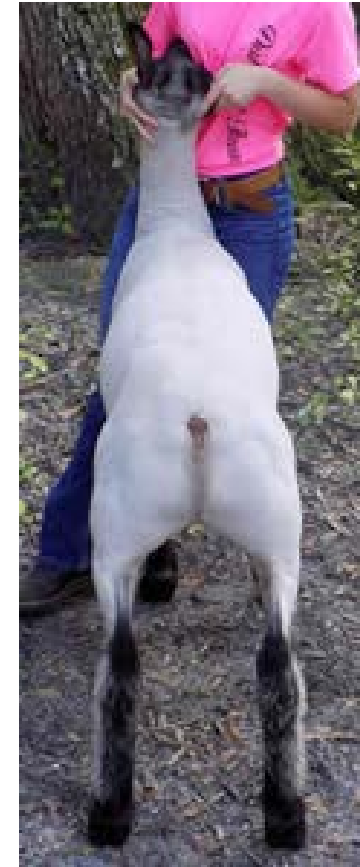




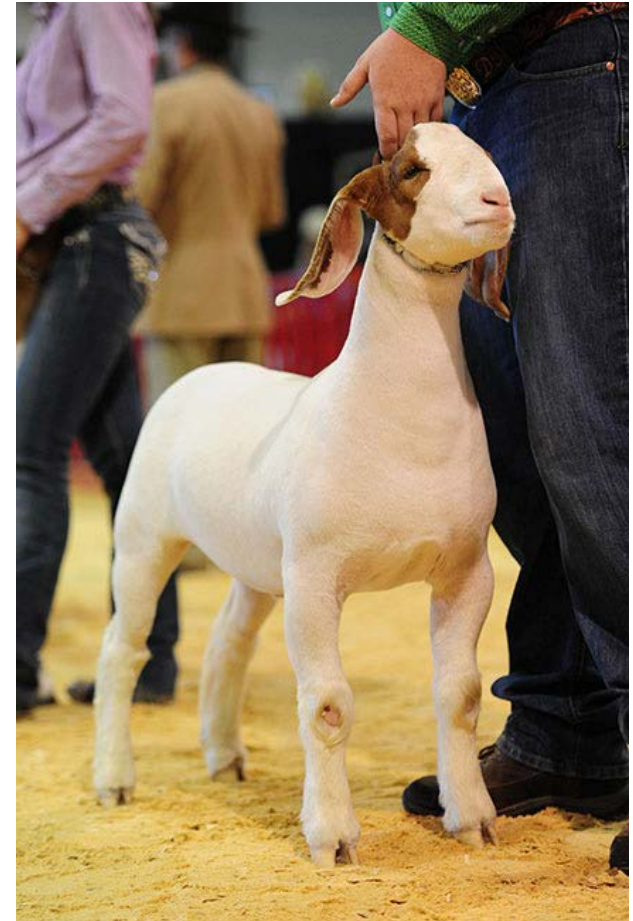












1



2



3



4



1



2



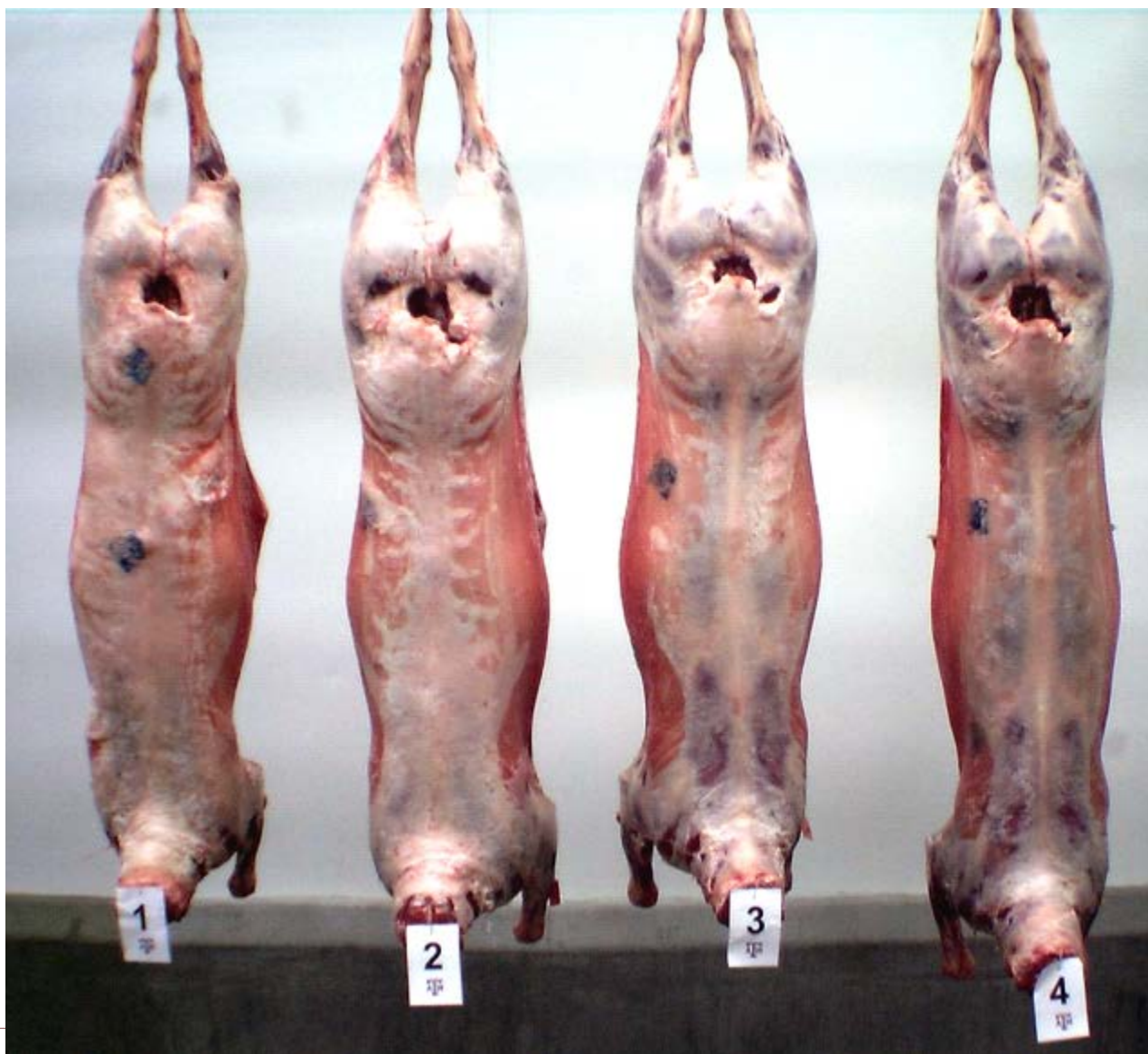
3



4









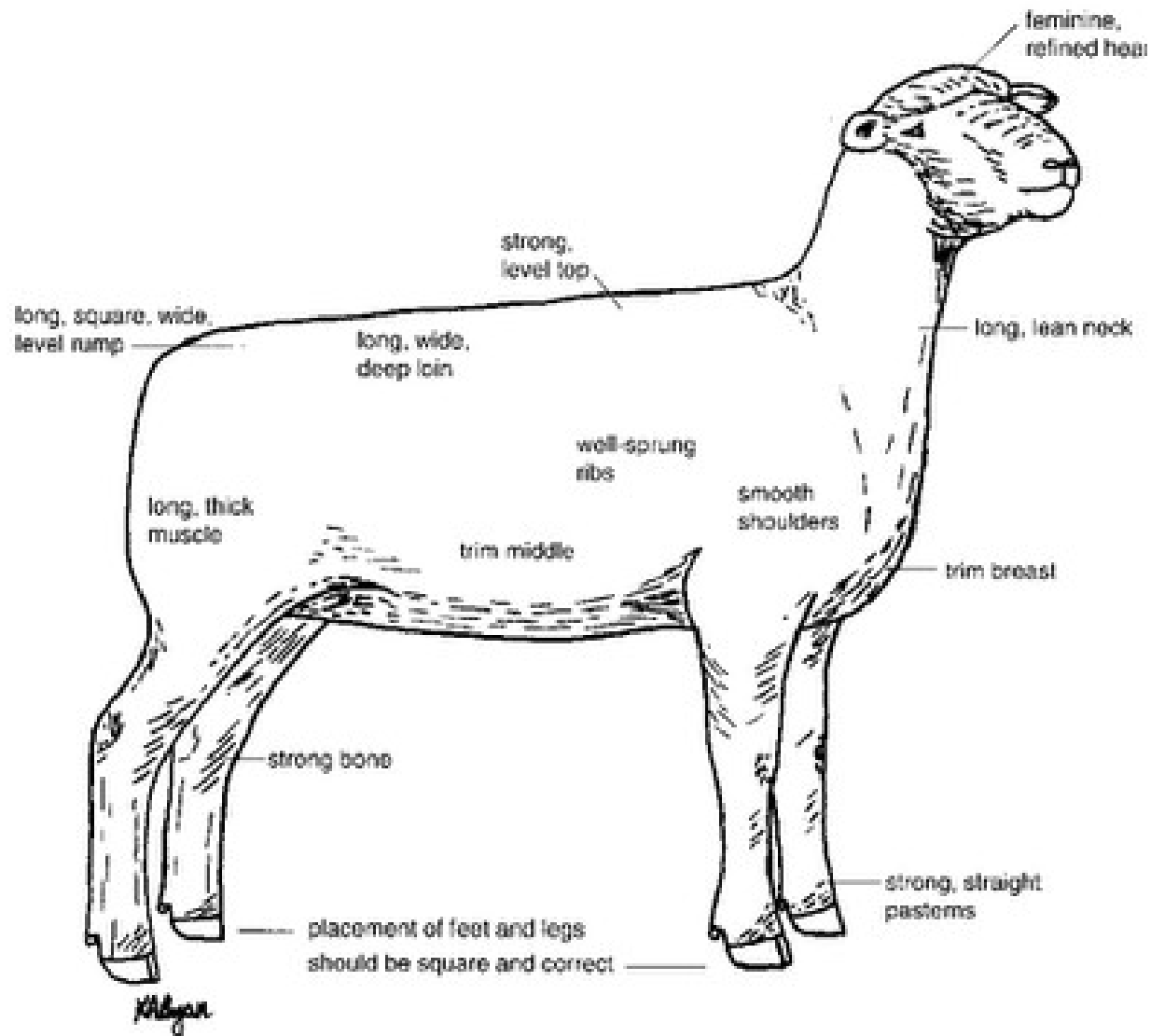




When evaluating market animals, work from the ground... up; and, from the rear... forward!

Livestock that are wide at the ground are generally wide on top!

Livestock that are wide on top; but, narrow at the ground are usually fat and light muscled!

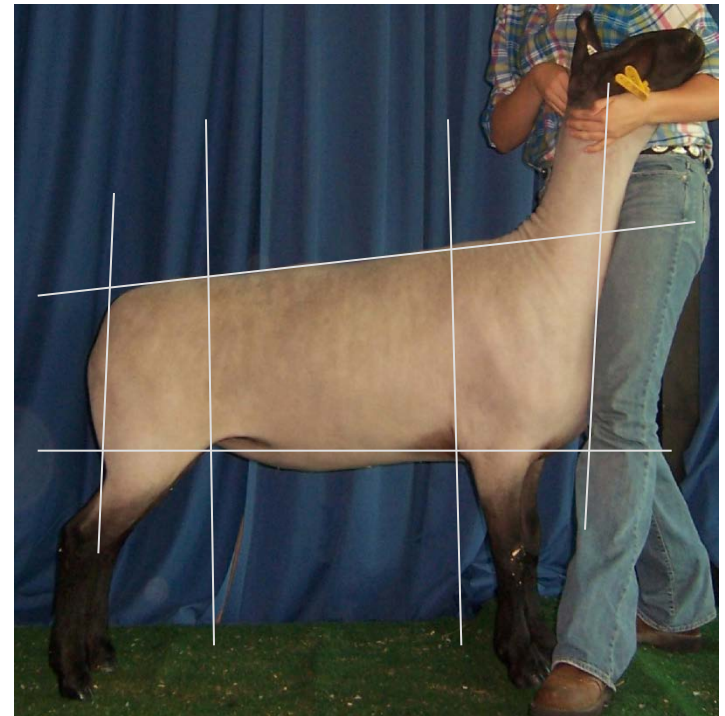


# What we look for...

- ⊙ Skeletal correctness
  - ⊙ Base width and foot size
  - ⊙ Width between pins; square-wide-long-level hip
  - ⊙ Rib shape..... ( ) or I I
  - ⊙ Long-level spine
  - ⊙ Elevated chest floor
  - ⊙ Smooth shoulders
- ⊙ Growth – Size
- ⊙ Muscle
  - ⊙ Quantity, type (long and smooth) and location
- ⊙ Femininity / Masculinity
- ⊙ Breed character

















© Questions?