

November 2016



The Clover Connection

NOVEMBER EVENTS

- 1st Major Show Entry Night 3-6 PM at the County Extension Office
- 1st Rifle Club Practice 4-6 PM at the Huntsville Police Range
- 1st Horse Judging Practice 5 PM at the Huntsville High School Ag Shop
- 3rd Dog Club Meeting 6:00 PM at the Walker County Fairgrounds
- 5th Aggiefest Livestock Judging Contest
- 5th Horse Judging Workshop: Aggiefest
- 7th Monday Club: Duds to Dazzle 4-5 PM at the CEO
- 7th Beef Quiz Bowl Practice 5:30 PM at the CEO
- 7th Sewing Club Meeting 6:00 PM at the CEO
- 7th WCF Rabbit Tag-In 6:00 PM at the CEO ****Mandatory****
- 8th Huntsville Food Club Meeting 6 PM at the
Huntsville Church of Christ
- 9th Livestock Judging Practice 6 PM at the New Waverly Fire Station
- 10th Dog Club Meeting 6:00 PM at the Walker County Fairgrounds
- 10th Clover Kids Meeting 6:00 PM at the CEO
- 10th Rifle Club Meeting 4-6 PM at the County Extension Office
- 11th **Extension Office Closed for Veterans Day**
- 11-12 Junior Leadership Lab at Carolina Creek, Huntsville, TX.
- 12th Scramble Heifer Weigh- In 9:00 AM at the WCFG
- 13th Horse Club Roping Practice
- 14th Monday Club: Healthy Lifestyles 4-5 PM at the CEO
- 14th Swine Club Meeting 6:00 PM at the CEO
- 14th New Waverly Community Club Meeting 7 PM at the NW Elementary
NW Clover Kids will meet at 6:30 PM
- 15th Beef Club Meeting 6:00 PM at the CEO
- 15th Lamb/Goat Meeting 6:30 PM at the CEO
- 17th Dog Club Meeting 6:00 PM at the Walker County Fairgrounds
- 17th Horticulture Club Meeting 6:30 PM at the CEO (outdoor learning
area)
- 17th Poultry Club Meeting 6:00 PM at the CEO
- 17th Rifle Club Meeting 4-6 PM at the CEO
- 19th Rabbit Showmanship Clinic 10 am at the County Extension Office
- 20th New Waverly Food Club Meeting 3 PM at the NW High School
- 21st Beef Quiz Bowl Practice 5:00 PM at the CEO
- 21st County Council Meeting 6:00 PM at the County Extension Office
(Officer Elections)
- 22nd VFD Informational Meeting 6 PM at the
Walker County Storm Shelter
- 22nd Southern Classic Early Registration Due Online
- 24-25 **Extension Office Closed for Thanksgiving**
- 27th Horse Club Roping Practice
- 28th Major Show Swine Validation 3:30-5:30 PM at
the CEO
- 30th 4-H Opportunity Scholarship Training—WebEx 6:30 PM

Happy
 Thanksgiving

Project Information for ———November

Beef Club

Beef Club will meet on **Tuesday, November 15th at 6:00 pm** at the County Extension Office.

Poultry Club

Poultry Club will meet on **Thursday, November 17th at 6 pm** at the Walker County Extension Office. They will be having their 2nd annual poultry quiz bowl, so come out and see what that contest is all about.

New Waverly Community Club

NW Community Club will meet on **Monday, November 14th at 7 pm** at New Waverly Elementary School. Questions and enrollment 6-7pm Meeting starts at 7:00pm. The New Waverly Clover kids will be meeting at 6:30 PM.

Swine Club

Swine Club will meet on **Monday, November 14th at 6:00 pm** at the Extension Office. Officer elections will be held so come prepared with a short speech about swine and yourself if you're interested in running for an office position.

Horticulture Club

The Horticulture Club will be meeting at 6:30 PM at the Walker County Extension Office Outdoor Learning Center.

Rifle Club

The Rifle Club will be shooting Tuesday, Nov. 1st at the Huntsville police range from 4-6 pm. Thursday, Nov. 10th and 17th they will shoot at the Extension Office from 4-6pm. They will not be shooting Nov. 24th.

Shotgun Club

The Shotgun Club will be not be shooting on the range in November and December. Dry Fire practices will continue at whatever time you are signed up for. Please call the Extension Office if you have any questions about your time. The club will start shooting on the range again in the spring of 2017.

Rabbit Club

The Rabbit Club will have a MANDATORY meeting at 6:00 pm on Monday, November 7th at the County Extension Office. Exhibitors MUST be present and all breeding stock must be of the exhibitor's ownership by this date.

Scramble Heifer Club

Scramble Heifer participants will meet at **9:00 am on Saturday, November 12th** at the Committeemen's Room for their second Weigh-in/Meeting.

Huntsville Food & Nutrition Club

The Huntsville Food & Nutrition Club will meet at the Church of Christ located on Hwy 30 West on **Tuesday, November 8th at 6:00 pm**. They will be going over the Food Challenge contest.

Lamb/Goat Club

The Lamb/Goat Club meeting will be held on **Tuesday, November 15th at 6:30 pm** at the County Extension Office.

Clover Kids

Youth in grades K-2nd are invited to join our Clover Kids Club. The meeting will be on **Thursday, November 10th at 6 pm** at the County Extension Office. The rabbit project will be the topic of discussion.

Horse Club

Horse Club will continue having roping practices for the month of November. They will meet on Sundays November 13 & 27 at 3pm at the home of the Lynch family unless otherwise notified.

Sewing Club

The sewing Club will meet **Monday, November 7th beginning at 6 pm** at the County Extension Office.

New Waverly Food Club

The New Waverly Food Club will meet on **Sunday, November 20th** at the New Waverly High School at 3 pm.

Monday Club

Monday Club happens Monday from 4-5pm to allow you to come out and try new contests and events that 4-H has to offer. We invite everyone out to try new projects! Below is the November schedule.

November 7th: Duds to Dazzle

November 14th: Healthy Lifestyles

Beef Quiz Bowl will meet Monday, November 7th at 5:30 and Monday, November 21st at 5:00pm at the CEO.

Dog Club

The Dog Club will meet on Thursdays in the month of November at 5:30 PM at the Walker County Fairgrounds. They will meet with dogs on November 3rd, 10th, and 17th at 6:00 PM. There will not be practice on November 24th due to Thanksgiving.

County Council

County Council will meet on Monday, November 21st at 6 PM at the County Extension Office. Officer elections will be conducted at this meeting, so come prepared with a speech.

One Day 4-H

Walker County 4-H members participated in a 4-H Community Service Day on October 8th called One Day 4-H. Some members helped load carts and cars with food from the Houston Mobile Food Bank at the Huntsville Church of Christ. Others cleaned up landscape at the schools in New Waverly as their community service project. Thank you to everyone that helped!



Walker County Christmas Parade



It's time to get in the Christmas spirit by riding on the Walker County 4-H Christmas float at the 2016 Walker County Christmas parade!

This year's theme is Joy to the World!

When: December 3rd

Where: We will meet at the SHSU parking lot between Avenue I and Avenue J at 5:00 PM. The parade will begin at 6:30 PM at 20th St. and Sam Houston Avenue.

Instead of ending the parade at 75 and 11th St. we will continue to the Storm Shelter where we will have our 4-H Christmas Party!

Walker County 4-H Christmas Party

The 4-H Christmas party will be immediately after the Walker County Christmas Parade.

When: After the Christmas Parade- 10:00 PM

Where: Storm Shelter, 455 State Hwy 75N, Huntsville, TX. 77320

Please bring a snack/appetizer to share with everyone. Along with donation items for food, toy, and pet supply drives. Items will be donated to local organizations.

We will also have a sock exchange that all 4-H members are welcome to participate in. Bring a pair of socks to exchange if you would like to play! More information will be coming out soon.

Clover kids will also be able to do a gift exchange of their own so, if you are a clover kid be on the look out for more details on your gift exchange.



State Fair of Texas

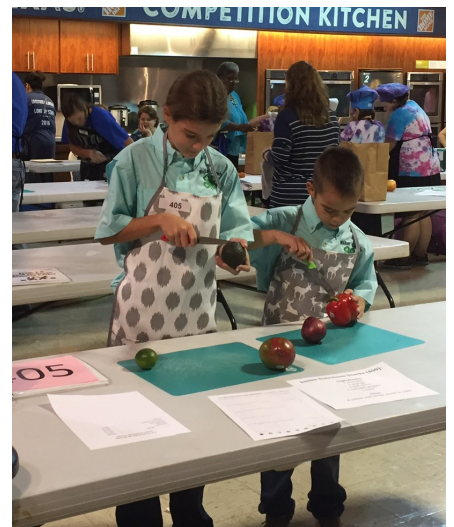
Walker County 4-H members competed with Livestock and contests at the State Fair of Texas during the month of October. Below are some pictures from the events that went on, and all the fun that was had!



Shelby Lepley accepting her banner for Public Speaking Ag Policy Division Champion! Congratulations Shelby!



4-H members that competed in the Ag Product ID Contest at the State Fair.



Walker County 4-H had 6 Food Challenge teams compete at the State Fair. Great job to all of the teams! One senior team with team members Victoria Bounds, Killian Grawe and Paige Tegeler placed 2nd in their category. The other senior team with team members Bailey Lamb, Chance Clipper, Katelyn Klawinsky and Jonah McGinty placed 3rd in their category.

VFD

Veterinary Feed Directive Informational Meeting

Extension Specialist, Dr. Joe Mask, will be joining us to talk about the **NEW CHANGES** to the VFD that you need to be aware of. Below are some topics that will be discussed:

- * What to expect with the new rules
 - * What are considered VFD Drugs
 - * How do you obtain a VFD
- * Establishing a Veterinarian Client Patient Relationship (VCPR).

6PM November 22nd

@ the Walker County Storm Shelter

455 State Hwy 75, Huntsville, TX 77320

RSVP at 936-435-2426



Educational programs of the Texas A&M AgriLife Extension Service are open to all people without regard to race, color, sex, religion, national origin, age, disability, genetic information, or veteran status. The Texas A&M University System, U.S. Department of Agriculture, and the County Commissioners Courts of Texas Cooperating

TEXAS A&M
AGRI LIFE
EXTENSION

November Birthdays!

1st Stratton Dyer
3rd Mckenna Davis
4th Logan Harper
5th Breckyn Slott
6th Kyia Williams
6th Kaid Brack
6th Racee Wilkerson
8th Celeste Snell
8th Darmesha Evans
9th Killian Grawe
13th Macy Floyd

14th Ashely McCaffety
16th Donovan Field
18th McKayla Schultz
19th Allison Stoughton
22nd Savanna Delafuente
23rd Cody McLerran
24th Christian Winston
26th Kelsey Bearden
27th Layla Biscoe
28th Garrett Lynch



29th Colby McVey
30th Jenna Langley
30th Allison Phillips

Major Show Entries

(For Fort Worth, San Antonio, Houston, Austin, & San Angelo)

Those planning on exhibiting livestock, competing in judging contests or shotgun matches at the 2017 Major Shows (i.e. Ft. Worth, San Antonio, Houston, San Angelo or Austin) there will be a Major Show Entry Day held at the County Extension Office on **Tuesday, November 1st from 3:00 pm - 6:00 pm.** To make it more convenient for participants this we have posted all the major show entry packets on our website.

Visit our website at <http://walker.agrilife.org/4-h/> to view and print off and complete the forms before you get to the Extension Office. This should make the process quick and easy for everyone. It will be a "come and go" event. Please call the Extension Office if you have any questions or need help with your major show entries.

Don't forget *parents and exhibitors must still be present at time of entry for signatures.* Also, please bring exhibitors social security and Quality Counts numbers.

Late entries will not be accepted...NO EXCEPTIONS!!!

THIS IS A MANDATORY MEETING FOR ALL MAJOR SHOW EXHIBITORS!!!

Major Show Swine Validation

(Fort Worth, San Antonio, Houston, Austin, & San Angelo)

Major Show Swine Validation will take place on **Monday, November 28th from 3:30 pm-5:30 pm** at the County Extension Office.

Club Officers

Over the last couple of months club meetings have started back up and officer elections are underway. We want to congratulate all of the 4-H members who ran for a position and are part of an officer team for the 2016-2017 4-H year. Becoming an officer is a great accomplishment that brings leadership and responsibility, as well as reward! Highlighted below are the elected officer teams for the 2015-2016 year!



New Waverly Community Club

President: McKailah Ellisor

Vice Pres: Brady Wilson

Secretary: Bethany Brock

Treasurer: Jordan Ellisor

Historian/Reporter: Korbin Fagan

Parliamentarian : Shelby Lepley (not pictured)

Lamb/Goat Club

President: Bailey Lamb

Vice President: Chance Rushing

Secretary: Emily lamb

Photographer: Gage Lee

County Delegate: Boyd Hanagriff

Rabbit Club

President: Isaac Pendley

Vice President: Cason Moorman

Reporter/Treasurer:
Kara Kuykendall

Sewing Club

President: Victoria Bounds

Secretary: Lauren Klawinsky

Photographer: Oliva Del Rio

Poultry Club

President: Braden Brock

Vice President: Brady Wilson

2nd Vice President: Ryan Stoughton



Horse Club

Roping Practices:

Horse Club will continue roping in the month of November. Practice schedule is listed below:

Sunday, November, 13th at 3 PM

Sunday, November, 27th at 3 PM

These events are scheduled to be at the home of the Lynch family. 169 FM 1696w Huntsville, TX. (1 mile west of SH 75 on the left)

Please watch your emails on a possible change of location.

Horse Club Banquet:

The 2015-2016 Horse Club Banquet is scheduled for December 11th from 5-7 PM at the Walker County Storm Shelter.

Come out to enjoy an evening of recognizing all of the hard work that the youth and adults put into the Horse Club this past year. Dinner will be served while awards are distributed to the 4-H members.

Please RSVP to the Extension Office at 936-435-2426 no later than Friday, December 2nd!

Southern Classic– Livestock Project Clinics

The Southern Classic Beef, Lamb, Goat and Swine Clinic and Prospect Show is designed to provide an educational opportunity for 4-H and FFA families needing experience in the show ring. The weekend, includes educational programs mixed with competitive experiences designed to prepare youth for their ultimate experience, "The County Youth Livestock Show". The Southern Classic is open to all 4-H and FFA families and is **ALMOST FREE OF CHARGE!**



Date: December 9-11, 2016

Location: Brazos County Expo (5827 Leonard Rd. Bryan, TX 77807)

Early Bird Registration: \$30.00 by November 22nd

Late Registration: \$40.00 from November 23rd - December 11th

On-site Registration: \$40.00

Registration includes participation in all workshops & livestock shows offered on Saturday and Sunday. It also includes a lunch for all registrants on Saturday and door prize drawings.

General Schedule:

Friday: December 9, 2016

4:00 pm - 7:00 pm: Barns Open & Check- in

Saturday: December 10, 2016

7:00 am: Barns Open and Check-in

9:30 am: General Session Starts

10:30 am Individual Species Sessions Start

12:00: Catered Lunch

1:00 pm Show Weight Cards are Due

1:15 pm: Afternoon Species Sessions Start

4:00 pm Adjourn

Sunday: December 11, 2016

4-H Opportunity Scholarship

The Texas 4-H Youth Development Program and the Texas 4-H Youth Development Foundation is pleased to offer **senior high school 4-H members and current college students** the opportunity to apply for an Opportunity Scholarship through the Texas 4-H Youth Development Foundation. This year Texas 4-H members can apply for scholarships in three areas, baccalaureate, courageous heart, and technical. Former Texas 4-H members will be able to apply for scholarships through the collegiate scholarship program.

All applications and support materials are available through the Walker County website:

<http://walker.agrilife.org/4-h-opportunity-scholarship/>

Applications are due to the Walker County Extension Office by **January 20, 2017**. Please contact us prior to this date if you have questions or need any help with the application process.

Please be aware that due to a continued increase in incomplete and/or incorrect completion of the scholarship applications from applicants, any incomplete or incorrect application submitted to state will not be considered.

Additional information can also be found on the State 4-H website at:

<http://texas4-h.tamu.edu/scholarships/>

District 9 4-H Community Service Project



Donate NEW or *GENTLY USED* handbags and bring HOPE to women & children

Children in shelters across Texas will select a donated bag to give their moms on Mother's Day. Each bag will be fitted with a tag that has Texas Advocacy Project's toll-free legal line and pamphlets detailing steps to get and stay safe.

**District 9 4-H is collecting handbags for our Community Service Project.
You can drop them off at your local extension office or bring them to
Jr Leader Lab on November 11, 2016.**

If you would like to help process bag donations, please email: vol@TexasAdvocacyProject.org
They are located in Austin.

Thank you for helping the Texas Advocacy Project achieve their mission to provide free legal services and access to the justice system to victims of domestic & dating violence, assaults, and stalking in Texas.

1-800-374-HOPE
www.TexasAdvocacyProject.org
#Handbags4HopeTX

For questions about this community service project please contact Keelie Wendt, D9 2nd Vice Chair at keeliewendt@gmail.com

Sigma Alpha Beta Pi Chapter 1st Annual Winter Blow Out 2016

Montgomery County Fair-
grounds

9201 Airport Rd

Conroe, TX 77303

December 17, 2016

Registration Fee

Early Entry Fee: \$20

Late Entry Fee (Day of Show):
\$25

Showmanship is \$5 at the gate
after each species show



Species:

- ◆ Steers
- ◆ Heifers
- ◆ Swine
- ◆ Goats
- ◆ Sheep

Important Information:

- ◆ Check-in/ weigh in time: 6– 8 a.m. All weight cards will be due at 8 a.m. No exceptions.
- ◆ Shows will begin at 9 a.m.
- ◆ “Blow and Go Show”
- ◆ Large and small animal rings will be running concurrent.
- ◆ Belt Buckles will be awarded to both Grand and Reserve winners of each show.
- ◆ Sigma Alpha is a professional sorority. We ask that alcohol products not be consumed or brought to the fair-grounds!
- ◆ If you are paying early entry fees with cash or check, please mail them to:

Sam Houston State University

Attn: Sigma Alpha Beta Pi Chapter

P.O. Box 2088

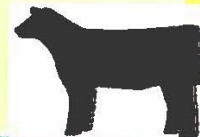
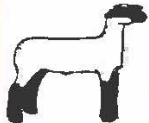
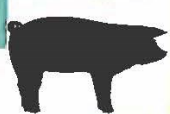
Huntsville, Texas 77340

For more information please contact:

Megan O'Brien or Kori Anderson

sigmaalphalivestockshow@gmail.com

713-252-1977; 281-622-0514





Non-Profit Org.
U.S. Postage Paid
Huntsville, TX
Permit #240

***102 Tam Road Suite B
Huntsville, TX 77320***

Kristy Titzman

County Extension Agent, 4-H

Lana Franceschini

County Extension Agent, FCS

Reggie Lepley

County Extension Agent, Ag

Elizabeth LaSalvia

Extension Assistant, Ag/4-H

Educational programs of Texas Cooperative Extension are open to all people without regard to race, color, sex, disability, religion or national origin. The Texas A&M University System, U.S. Department of Agriculture, and the County Commissioners Courts of Texas Cooperating. Provisions from the American Disability Act will be considered when planning educational programs. Please notify the Walker Co. Extension office if you plan on attending on Extension Educational program and need specialized services. Notification of at least two weeks in advance is needed, so that we may have ample time to acquire resources needed to meet your needs.

If you have not completed an enrollment form for the 2016-2017 4-H year,
it is time to do so!

To receive an enrollment form you can download one from this link,

<http://walker.agrilife.org/Enrollment-Form.pdf>

visit the County Extension Office or pick one up at your next club meetings.

4-H dues after October 31, 2016 are \$35.00.

**Remember you if you are showing a project under 4-H at the Walker
County Fair you must fill out a green 4-H enrollment form for the
2016-2017 4-H year.**